



e-ISSN: 2319-8753 | p-ISSN: 2347-6710

IJIRSET

International Journal of Innovative Research in
SCIENCE | ENGINEERING | TECHNOLOGY



INTERNATIONAL JOURNAL OF INNOVATIVE RESEARCH

IN SCIENCE | ENGINEERING | TECHNOLOGY

Volume 11, Issue 5, May 2022

ISSN INTERNATIONAL
STANDARD
SERIAL
NUMBER
INDIA

Impact Factor: 8.118

A Novel Method for Real-Time Driver Drowsiness Detection using Object Detection Algorithm

Vishal Kaushik , Dr. A.K. Gautam, Dr. Pragati Sharma

M.Tech Student, Department of Electronics & Communication, S.D. College of Engineering & Technology, Muzaffarnagar, U.P., India

Professor, Department of Electronics & Communication, S.D. College of Engineering & Technology, Muzaffarnagar, U.P., India

Assistant Professor, Department of Electronics & Communication, S.D. College of Engineering & Technology, Muzaffarnagar, U.P., India

ABSTRACT: Driver drowsiness detection is the major confront in reducing traffic accidents to improve safety and security technology, so it plays a vital role in preventing road accidents. Researchers have done lots of study and various techniques that are incorporated to take care of safety and security measures. In this paper, a real time face detection implementation is carried out by monitoring driver eye and mouth by using high-resolution camera that monitors directly towards the driver's face. The recorded video of driver face is converted into many image frames, detects the features like eyes (blink) and mouth (yawn). If the eye blinks is closed and mouth yawn is detected based on performance metrics, the driver detection system immediately warns red signal beep alarm as the output. We use LBPH technique and Haar detection method for accurate results. Keywords: Haar detection method, Local Binary Patterns Histogram (LBPH), Root Mean Square Error (RMSE), Eye Aspect Ratio (EAR).

KEYWORDS: Local Binary Patterns Histogram, Root Mean Square Error, Eye Aspect Ratio

I. INTRODUCTION

One of the most common reasons for accidents is that a driver is tired or drowsy. Every year, more people die in these kinds of accidents all over the world. The goal of this paper is to cut down on the number of accidents caused by drivers who are tired or drowsy. In turn, this will make transportation safer. Driver drowsiness detection is a feature in cars that can help keep drivers from getting into accidents and save their lives when they are getting sleepy. This project uses computer vision to figure out if a driver is too tired to drive. With technology always getting better and new things being made, there are new ways to get around. We're becoming more and more dependent on it at a fast rate. It has changed our lives in a lot of ways. There are some rules that every vehicle driver should follow, no matter what their social status is. One is to stay awake while driving, and the other is to move around. The current ways to tell if a driver is tired are either very expensive systems that only work on high-end cars or cheaper systems that are not very reliable.

This paper is about making a drowsiness detection system that works well and doesn't cost too much. The method needed in this case uses the shape of the eyes and mouth to figure out if someone is tired. This paper plans to do the same thing by making a system to detect drowsiness and keep an eye on it to make sure it doesn't lead to anything bad. Today, there are more and more accidents on the roads, and drivers who are tired are a big reason why. This has been widely accepted. It's hard to say how many accidents are caused by sleepy drivers because most of the time, the number is understated. The change from being tired to falling asleep is subtle, and most drivers don't notice it. This shows why it's important to do more work in this area to try to cut down on accidents caused by drivers being too tired and encourage us to make a system that can tell when a driver is getting sleepy.

II. LITERATURE REVIEW

The survey comprises current technologies and studies that are relevant to our project's subject matter. We want to gain a deeper appreciation for the work that has already been done in this area of research, as well as insight into the areas in which we should concentrate our efforts going forward. The existing sleepiness detection systems for facial landmark detection [7], blink detection, and yawn detection have been reviewed in this literature review. Deep CNN [13], Computer Vision [15], Behavioral measurements, and machine learning are a few of the methods used to identify sleepiness. Each of these approaches has its own benefits, drawbacks, and degree of accuracy. EAR and MAR-based blink detection and yawn detection devices have been studied. For motorised cars using Web Push Notifications, [1] titled "Computer Vision based sleepiness detection for motorised vehicles" A computer vision-based sleepiness system for automobiles with warning sounds and online push alerts has been developed in this study. To avoid an accident, the motorist will be alerted by these messages. If the driver isn't paying attention, the system will send a warning to indicate local coffee businesses. As a consequence, the system was able to identify the driver's fatigue and perform admirably throughout the test. To determine whether the eyes are open or closed, researchers turned to the Eye Aspect Ratio. When a buzzer was activated, the user was given a web push message that displayed local coffee businesses.

Due to the usage of the Raspberry Pi camera, the system was unable to function at night as described in the article. Using a night-vision camera would have been preferable. Real-time monitoring of driver sleepiness on mobile platforms using 3D neural networks is described in detail in [2] [2]]. Drivers' tiredness was detected from real-time facial footage using depth-wise separable 3D convolution techniques, and micro naps were discovered and reported to the vehicle's control panel. There is no need for a developer to pre-specify a set of characteristics since they may overlook elements like nose wrinkles, eyelid movement, and other facial motions based on the findings acquired. The dataset utilised in this study only contains 18 individuals, and the frames were not correctly tagged.

A driver monitoring system may be used to identify tiredness. Drowsiness was detected using a driver monitoring system (DMS) and a variety of sensors in this study. Other vehicle-based sensors have also been used to gather data. The models were shown to be successful in separating sleepiness into three levels: mild, moderate, and severe. However, the model's ability to distinguish between moderate and severe levels was inefficient. The paper's flaws include the model's inability to distinguish between mild and severe sleepiness. It's also a problem that the sample size employed in this study is somewhat tiny.

"Driver Drowsiness Detection System Using Computer Vision" is the title of [4]. Using E.A.R (eye aspect ratio) for simple, quick, and effective blink detection, the article aims to identify driver sleepiness by analysing human eye blinks. By delivering a dependably exact enough prediction of eye opening, the system was able to accurately identify driver tiredness. Facial landmark identification incurs a minor performance penalty, allowing this alert system to be utilised in real time. The paper's drawbacks include that a fixed blink length is assumed, despite the fact that everyone's blink duration is variable. Ear Position Ratio (EAR) is computed using two dimensional data, which does not account for out-of-plane head orientation and relies only on the eyes to identify sleepiness.

Drowsiness detection from [5] entitled "Eye Closure and Yawning detection" is discussed. Using Haar-cascade classifiers, the driver's eye and mouth movements are recorded in this work. This will aid in the detection of eye closure and yawning frequency. The technology also sounds an alert if the driver is tired or has fallen asleep behind the wheel. As a consequence, the algorithm correctly recognises needed faces and facial traits in around 85 percent of situations. Once the facial feature detection is affirmative, the algorithm is quick to identify tiredness. Due to poor illumination, the system's accuracy reduces, which is a shortcoming of the paper.

III. METHODOLOGY

As a first step, we are developing a system that accurately detects tiredness in a driver by the movement of eyelids and yawning, as well as a reliable voice warning system [6] in real time. Another goal is to create a system that can identify driver fatigue by continuously monitoring the retina of the driver's eyes. When the driver yawns repeatedly or has their eyes closed for a short period of time, the system should sound an alarm. Even if a motorist is wearing glasses, the method works. Poor illumination has no effect on the system.

Facial landmark detection is used to locate the subject's face in the photo. After that, significant aspects of the face may be detected using shape prediction algorithms. Pre-trained OpenCV HAAR cascades are used for face detection [14].

| DOI:10.15680/IJIRSET.2022.1105188 |

An already trained facial landmark detector from the dlib package is then used to estimate the position of 68 (x, y)-coordinates that correspond to face structures in the next step(s). The iBUG 300-W dataset is also used to train it. In order to detect tiredness, the EAR [8] uses the ratio of distances between horizontal and vertical eye landmarks. In order to identify yawns, the distance between the upper and lower lip will be determined and the distance will be compared to a threshold value [9]. Drivers may be alerted when they are yawning or starting to nod off with the use of an eSpeak module (a text-to-speech synthesiser).

Drowsiness must be detected by the suggested technology in a real-time driving situation. The quality of the camera will also have an impact on the performance. Due to the system's well-designed and user-friendly UI, it is suitable for day and night drivers alike. In order to accomplish their goals, users may follow the interface step by step. If the user's system matches the given standards, the proposed system must be accessible to the user at any time. In the event of a sudden application crash, the suggested system must be able to recover and be available for usage again. Python 3 will be used to implement the software functionality of the sleepiness detection prototype on the Raspberry Pi microcontroller board, along with the appropriate peripheral hardware.

IV. SYSTEM ARCHITECTURE DESIGN

A. System Architecture

The driver's face is collected by a camera and transformed into a video feed when the driver is behind the wheel. After that, the software analyses the video to see whether the user seems tired or sleepy, and it also measures their current degree of exhaustion. Among the most important aspects to analyse at this stage are the driver's face tracking, the driver's tiredness condition, the recognition of critical areas of the face based on eye closure and yawning [10]. Finally, a voice alarm will sound if sleepiness is detected.

High-Level System Architecture is shown in Fig. 1 as a series of inputs to the model as well as pre-processing and assessment in phases. The first step is to prepare the video stream for face tracking by preprocessing it. excision of face features like the eyes and mouth is the second step. In this stage, we look for signs of tiredness, such as eye closing or blinking, and we also look for yawning.

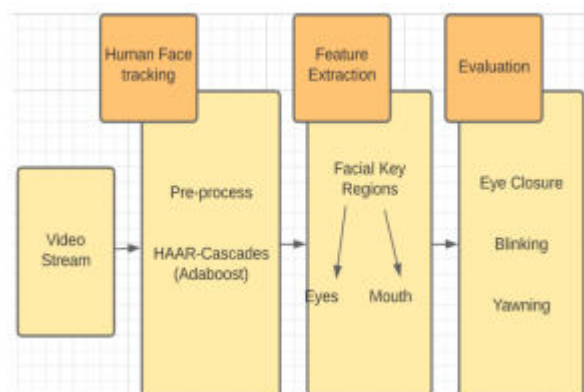


Fig. 1. System Architecture

B. Detailed Design

Driver alertness is constantly monitored, and an appropriate alarm is triggered if predetermined standards of alertness are found to be defaulted or violated. Consequently, action is done to avoid deaths. System Design of Driver Drowsiness and Yawn Detection System is shown schematically in Figure 2. When sleepiness or tiredness is detected, a voice-activated warning is sent via an onboard system in the dashboard, which uses a camera to constantly monitor the driver's face.

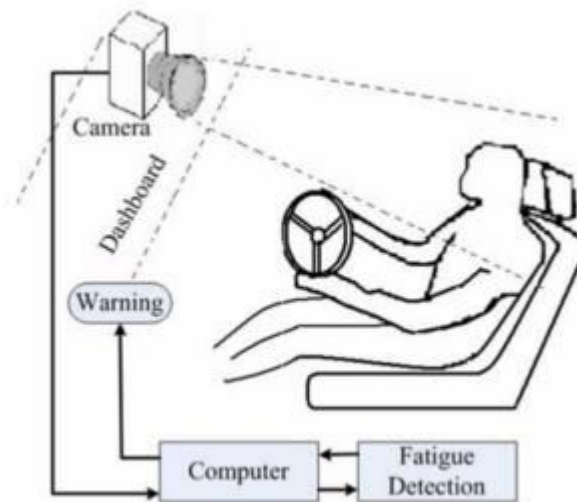


Fig. 2. System Design

V. EXPERIMENTAL RESULTS

To get the results, a large number of movies were recorded and their consistency was assessed in order to detect eye blinks and drowsiness. We added a camera with a 0.3 megapixel resolution to the PC for this task. White LEDs were needed to light the camera. Instead of white LEDs, the system may employ infrared LEDs, which are less intrusive. When the driver's sleep falls below a specific level, a buzzer sounds an alarm. It has been tried by a number of people in a variety of environments (day and night). When the lighting of the camera is turned on and the face is positioned at an appropriate angle, the machine can detect flickering and sleepiness with over 90% accuracy. In real-time applications, this is also an excellent outcome. The outcomes under various situations are shown below in separate images. Photographs of the whole face and head were captured. Both strategies have a great deal of validity. We added a camera with a 0.3 megapixel resolution to the PC for this task. The camera was lacking in white LED light. In order to ensure that the system is not disruptive, infrared LEDs are employed instead of white LEDs in real time. A buzzer is a device that emits an alert sound to wake the driver up in the event that he or she has fallen asleep at the wheel. The technology has been put through its paces with actual people in a variety of lighting environments (day and evening). When the camera's lighting is turned on and the subject's face is positioned at an appropriate angle, the machine can detect flickering and sleepiness with over 90% accuracy. It's a great finding that can be used to real-time applications. Various photographs in the gallery below provide examples of outputs under various circumstances. Photographs of the whole face and head were captured. Despite the fact that both procedures are correct.

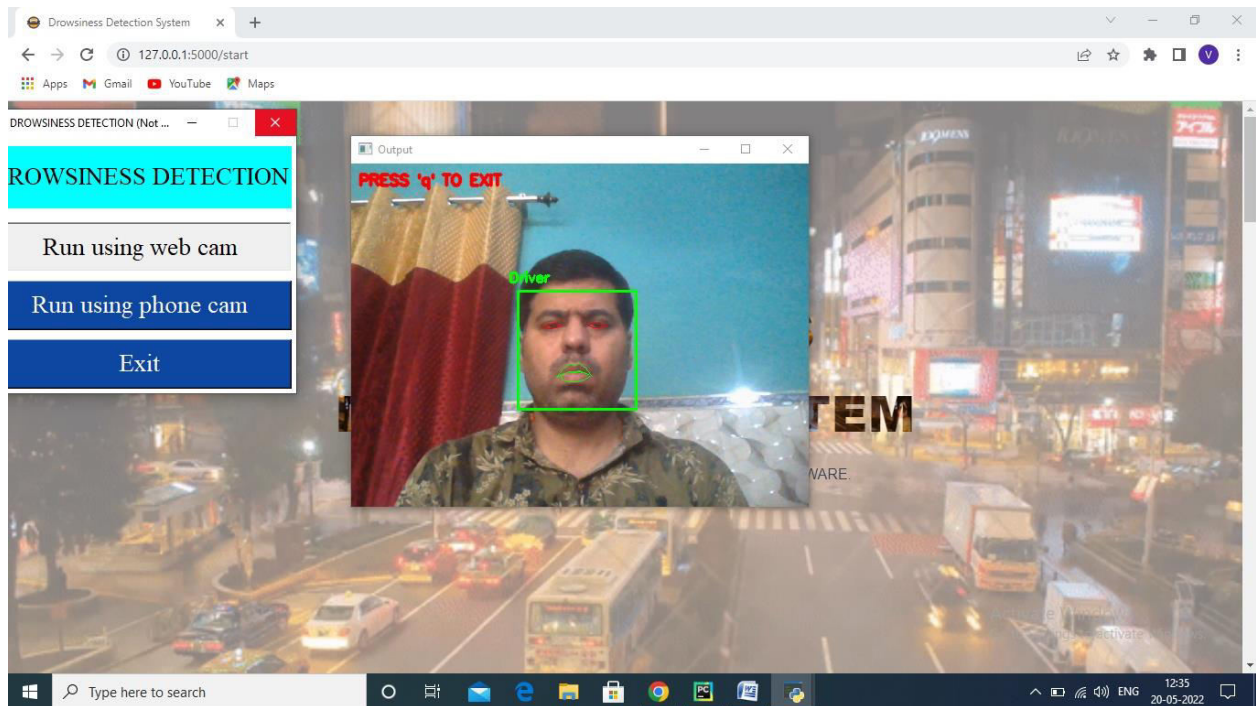
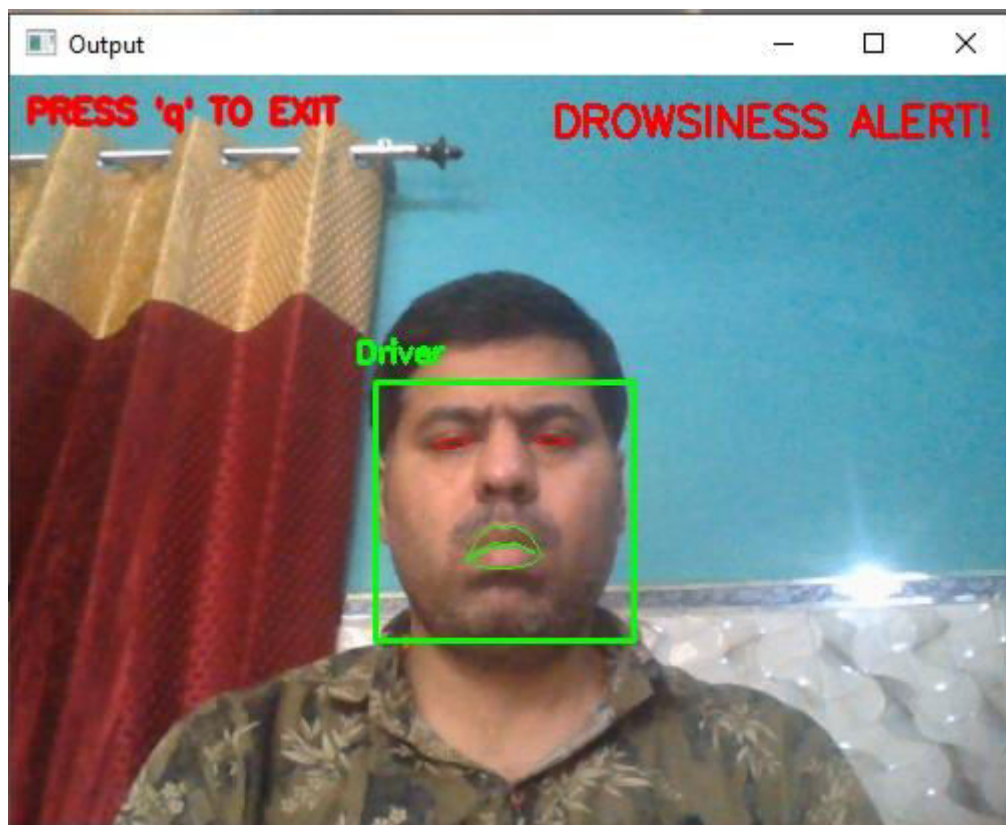


Figure: Face detection home page



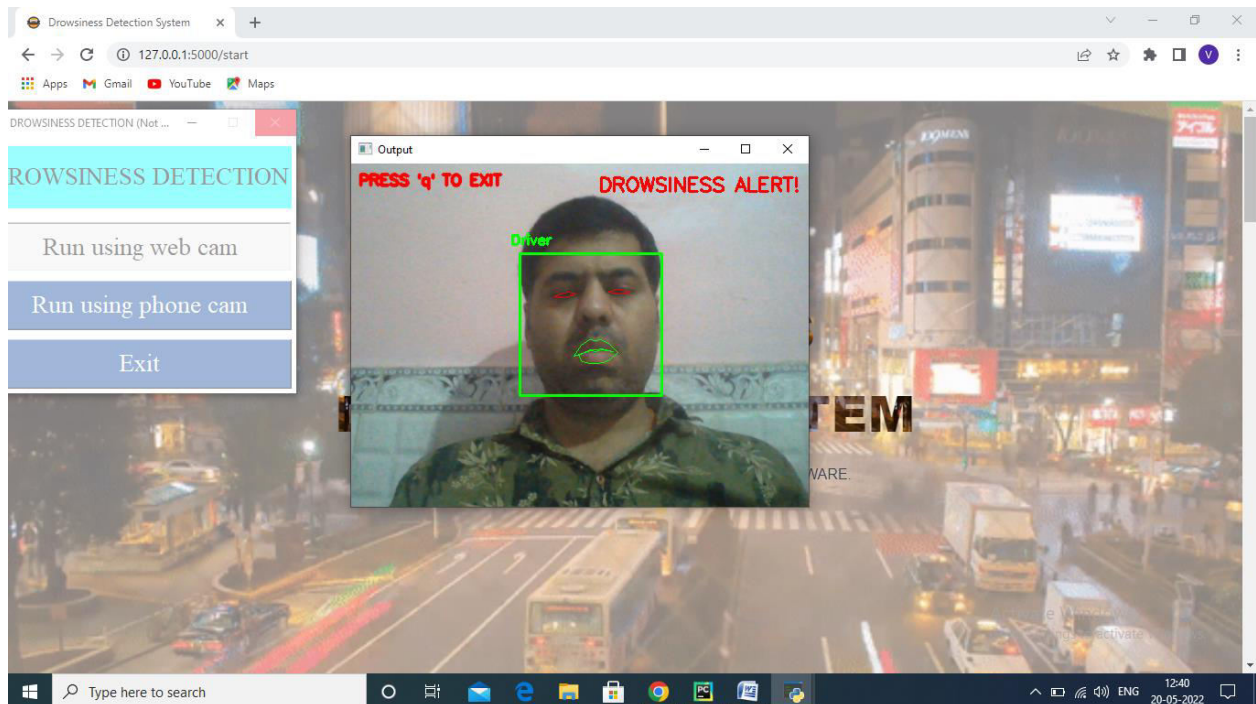


Figure: Face detection home page

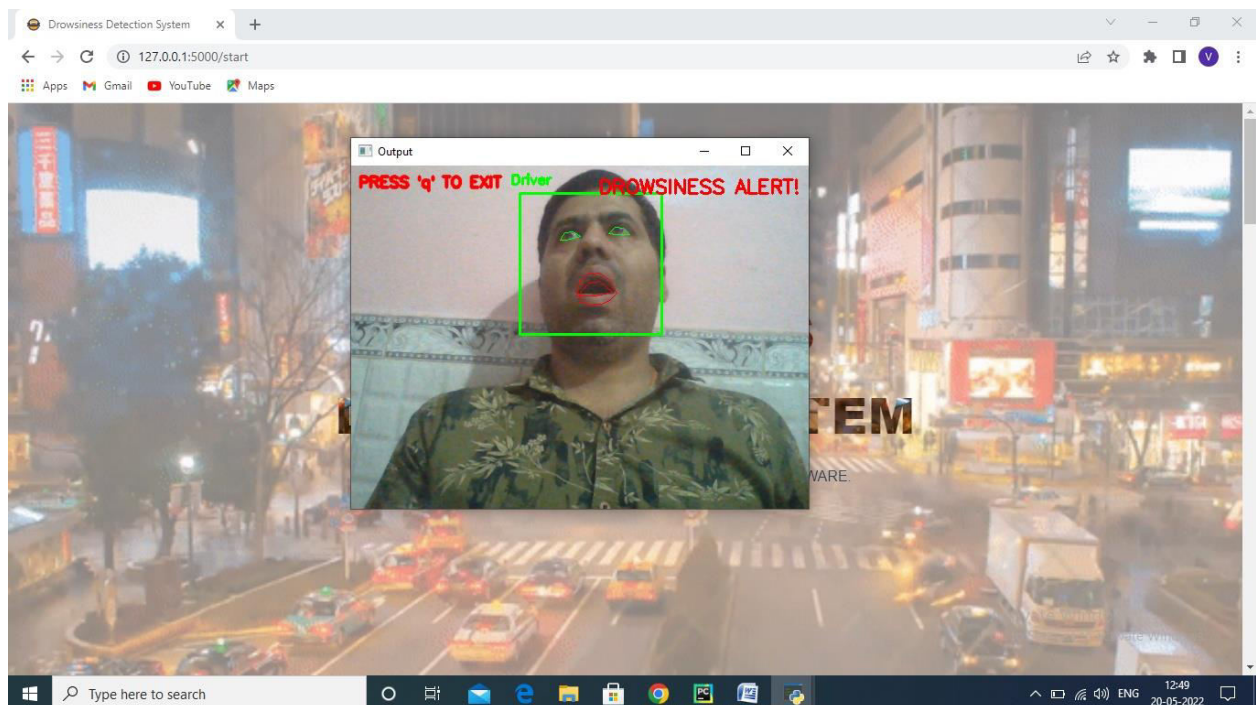


Figure : yawning detection

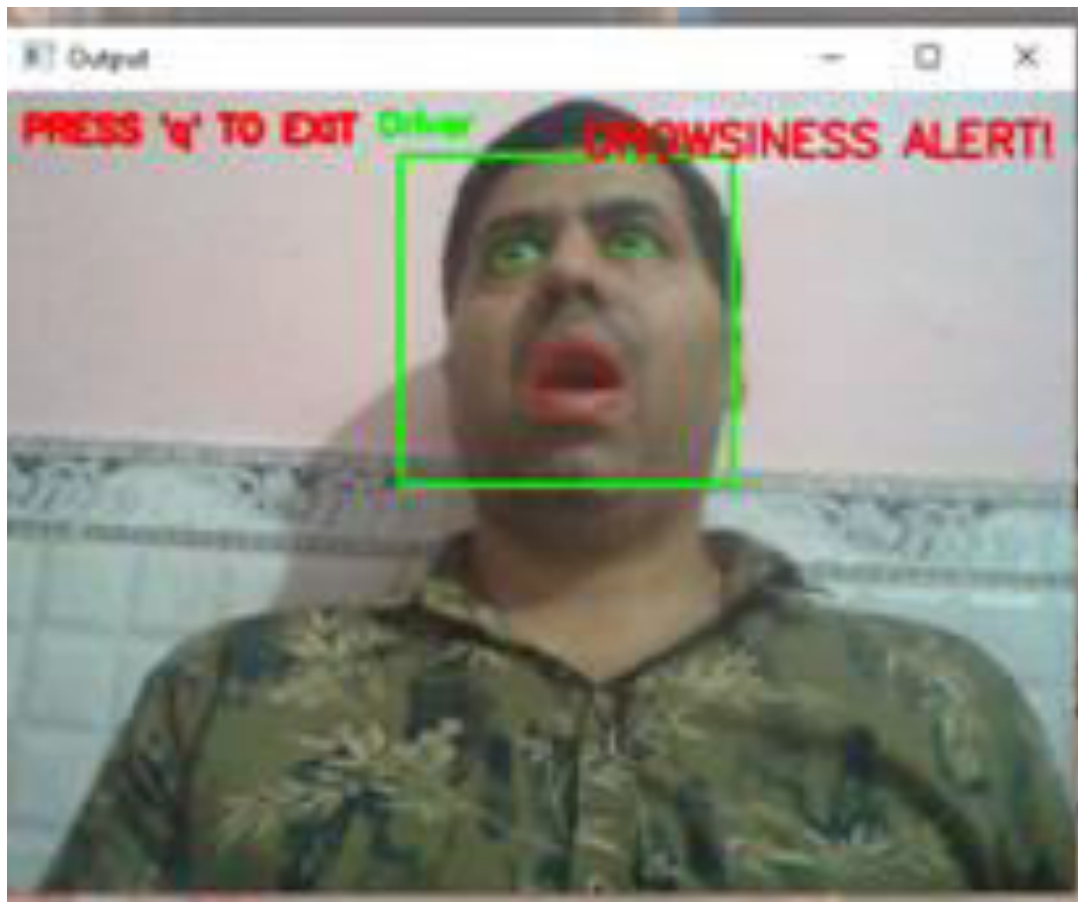


Figure: Drowsiness Alert detection

VI. CONCLUSION

In order to determine if a person is sleepy, this model looks at their eyes and lips. It is possible to identify essential aspects on the face using shape prediction algorithms [16]. Facial landmarks collected from facial landmark detection are used as inputs for these algorithms. A function called EAR is used to calculate the ratio of the distances between the horizontal and vertical eye landmarks. This module covers this function. As part of the system, an eSpeak module (text-to-speech synthesiser) is utilised to inform drivers when they seem to be falling asleep or yawning. The overall purpose of the project is to reduce the number of accidents and to advance technology in order to reduce the number of people killed as a result of car accidents. The utilisation of extraneous elements to gauge exhaustion and sleepiness may be the subject of future research in this publication. [18] The weather, the status of the vehicle, the time of night, and mechanical data are all examples of external influences. Road safety is threatened by driver sleepiness, and commercial vehicle operators are especially vulnerable. 24-hour services, variable environmental conditions, high yearly mileage, and more demanding work schedules are all elements that contribute to this major safety concern. Keeping an eye on the driver's drowsy status and providing the driver with the information they need to take action is a key step in preventing this issue. At this time, there is no way to alter the camera's zoom or orientation while the system is running. [20] Even once they've been located, further work may be done to automatically zoom in on the eyeballs.

REFERENCES

1. Rahul Atul Bhope, "Computer Vision based drowsiness detection for motorized vehicles with Web Push Notifications", IEEE 4th International Conference on Internet of Things, IEEE, Ghaziabad, India, 2019.
2. Jasper S. Wijnands, Jason Thompson, Kerry A. Nice, Gideon D. P. Aschwanden & Mark Stevenson, "Real-time monitoring of driver drowsiness on mobile platforms using 3D neural networks", Neural Computing and Applications, 2019.

3. Chris Schwarz, John Gaspar, Thomas Miller & Reza Yousefian, "The detection of drowsiness using a driver monitoring system", in Journal of Traffic Injury Prevention (Taylor and Francis Online), 2019.
4. Aditya Ranjan, Karan Vyas, Sujay Ghadge, Siddharth Patel, Suvarna Sanjay Pawar, "Driver Drowsiness Detection System Using Computer Vision.", in International Research Journal of Engineering and Technology(IRJET), 2020.
5. B.Mohana, C.M.Sheela Rani, "Drowsiness Detection Based on Eye Closure and Yawning Detection", in International Research Journal of Engineering and Technology(IRJET), 2019.
6. Driver Alert Control (DAC). (2016, Feb 10). Retrieved from <http://support.volvocars.com/uk/cars/Pages/owners-manual.aspx?mc=Y555&my=2015&sw=14w20&article=2e82f6fc0d1139c2c0a801e800329d4e>
7. Z. Mardi, S. N. Ashtiani, and M. Mikaili, "EEG-based drowsiness detection for safe driving using chaotic features and statistical tests," Journal of Medical Signals and Sensors, vol. 1, pp. 130–137, 2011.
8. T. Danisman, I.M. Bilasco, C. Djeraba and N. Ihaddadene, "Drowsy driver detection system using eye blink patterns," Universite Lille 1 & Telecom Lille 1, Marconi, France, 2010.
9. B. Hariri, S. Abtahi, S. Shirmohammadi, and L. Martel, "A yawning measurement method to detect driver drowsiness," Distributed and Collaborative Virtual Environments Research Laboratory, University of Ottawa, Ottawa, ON, Canada, 2011.
10. L. Li, Y. Chen and Z. Li, "Yawning detection for monitoring driver fatigue based on two cameras", Proceedings of the 12th International IEEE Conference Intelligent Transportation Systems., pp. 1-6, Oct. 2009.
11. S. Abtahi, B. Hariri and S. Shirmohammadi, "Driver drowsiness monitoring based on yawning detection", Proceedings of the IEEE International Control, Measurement and Instrumentation (CMI), IEEE, pp. 1-4, May 2011.
12. X. Fan, B. Yin, and Y. Sun, "Yawning detection for monitoring driver fatigue", Proceedings of the International Conference on Machine Learning and Cybernet, vol. 2, pp. 664-668, Aug. 2007.
13. F. N. Iandola, S. Han, M. W. Moskewicz, K. Ashraf, W. J. Dally and K. Keutzer, "Squeezenet: Alexnet-level accuracy with 50x fewer parameters and
14. K. Zhang, Z. Zhang, Z. Li and Y. Qiao, "Joint face detection and alignment using multitask cascaded convolutional networks", IEEE Signal Processing Letters, vol. 23, no. 10, pp. 1499-1503, Oct. 2016.
15. D. B. Lucas and T. Kanade, "An iterative image registration technique with an application to stereo vision", Proceedings of the 7th International Joint Conference on Artificial Intelligence, vol. 2, pp. 674-679, 1981.
16. D. S. Bolme, J. R. Beveridge, B. A. Draper and Y. M. Lui, "Visual object tracking using adaptive correlation filters", Proceedings of the IEEE Computer Society Conference on Computer Vision Pattern Recognition., pp. 2544-2550, Jun. 2010.
17. F. J. Henriques, R. Caseiro, P. Martins and J. Batista, "Exploiting the circulant structure of tracking-by-detection with kernels", Proceedings of the European Conference Computer Vision, pp. 702-715, 2012.
18. Y. Li and J. Zhu, "A scale adaptive kernel correlation filter tracker with feature integration", Proceedings of the European Conference Computer Vision, pp. 254-265, 2015.
19. M. Danelljan, G. Häger, F. S. Khan and M. Felsberg, "Discriminative scale space tracking", IEEE Transactions on Pattern Analysis and Machine Intelligence, vol. 39, no. 8, pp. 1561-1575, Aug. 2017.
20. N. Wang and D.-Y. Yeung, "Learning a deep compact image representation for visual tracking", Proceedings of the 26th International Conference on Neural Information Processing Systems., vol. 1, pp. 809-817, 2013.



INNO SPACE
SJIF Scientific Journal Impact Factor
Impact Factor: 8.118



ISSN INTERNATIONAL
STANDARD
SERIAL
NUMBER
INDIA



INTERNATIONAL JOURNAL OF INNOVATIVE RESEARCH

IN SCIENCE | ENGINEERING | TECHNOLOGY

 **9940 572 462**  **6381 907 438**  **ijirset@gmail.com**



www.ijirset.com

Scan to save the contact details